

Product composition

Components



Front camera



Rear camera



Cradle



Micro SD card
& Adapter



Power cable



Rear camera cable



GPS(2.5Φ)



User manual

Optional Accessories



High capacity
Micro SD card



USB SD card
reader



CPL filter



Cigarette
lighter power
cable

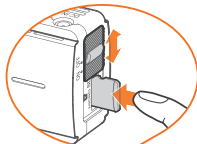


OBD-II power
cable

How to Install

Inserting the Micro SD Card

1. Open the power switch & lock.
2. Check the insertion direction of the Micro SD card.
3. Insert the Micro SD card until it makes a 'click' sound.
4. Close the power switch & lock.



Removing the Micro SD Card

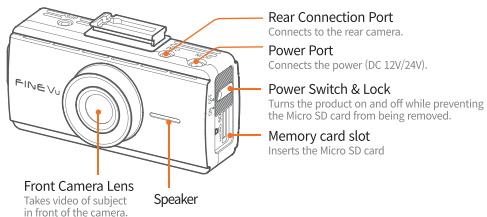
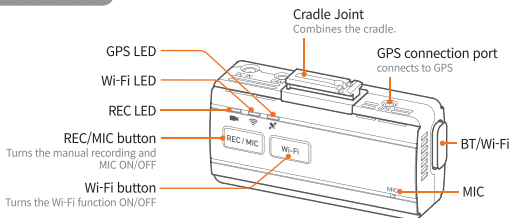
1. Open the power switch & lock.
2. Press the inserted Micro SD card.
3. When the Micro SD card protrudes from the product, remove it by hand.



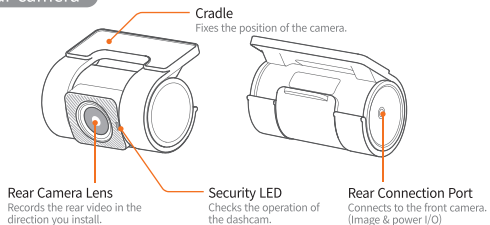
- Please make sure to use a genuine FineVu memory card.
- If a non-genuine memory card is used, compatibility and normal operation cannot be guaranteed.
- Carefully observe the direction in which the Micro SD card is inserted. If the Micro SD card is inserted incorrectly, the memory card slot of the product or the Micro SD card may be damaged.
- Please regularly back up important videos to a separate storage device.

Name of Parts

Front camera

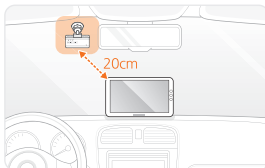


Rear camera



How to Install

1. Decide where you want to install the product.



2. Remove the protective film from the front camera.



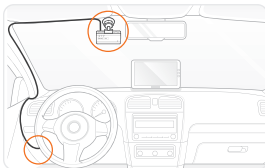
3. Peel off the protective film from the tape for attaching the cradle.



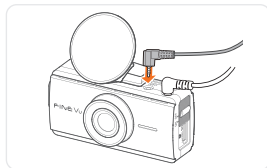
4. Attach the cradle from which the protective film has been removed to the location where you want to install the product.



5. Connect to the constant power cable connected to the fuse box.



6. Connect the rear camera cable to the front camera of the dashcam.



How to Use

LED color and operation description







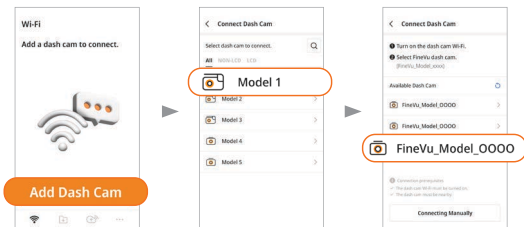
Image	Mode	Function	Operation description
 REC/MIC LED (White) /  REC/MIC Button	Manual recording	ON	• Tap REC/MIC button, and manual recording operates after LED blinks.
	Voice recording	ON	• Press and hold REC/MIC button for more than a second, and manual recording operates after LED blinks.
		OFF	• Press and hold for a second while voice recording is ON, voice recording function turns off after LED blinks.
	Driving	Driving Recording	• REC/MIC LED stays ON.
			Driving Impact
		Parking	Parking Detection
Event Detection (Parking Impact / Parking Motion)			• REC/MIC LED blinks.
 Wi-Fi LED (Blue) /  Wi-Fi Button	Wi-Fi	Waiting for Wi-Fi Connection	• Tap Wi-Fi button. Then Wi-Fi LED blinks.
		ON	• Wi-Fi LED stays ON .
		OFF	• Tap Wi-Fi button while Wi-Fi is ON LED blinks and turns off.
		Wi-Fi Initialization	• Press and hold Wi-Fi button for more than three seconds. Then Wi-Fi LED blinks.

Image	Mode	Function	Operation description
 GPS LED (Blue)	GPS	GPS module not connected	• GPS LED stays OFF .
		GPS not Receiving	• GPS LED blinks.
		GPS Receiving	• GPS LED stays ON.
	Booting up	Booting up	• All three LEDs turn ON at the same time. - When booting is completed, only REC/MIC LED turns ON.
	Driving	Memory Format / Reset	• Press and hold REC/MIC and Wi-Fi buttons for more than three seconds. Both REC/MIC and Wi-Fi LED blink at the same time.
		Firmware Update	• Both REC/MIC and Wi-Fi LED blink at the same time.

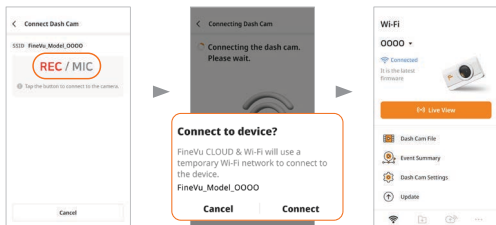
How to Use the FineVu CLOUD & Wi-Fi App

Connect to Wi-Fi or the cloud, depending on what is supported by the dash cam model.

Connecting the dash cam (to Wi-Fi)

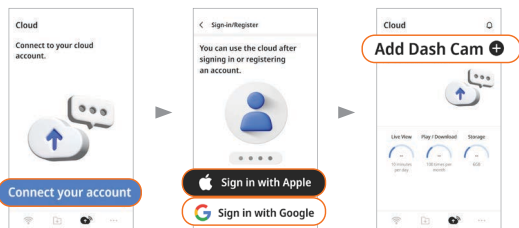


1. Open the “FineVu CLOUD & Wi-Fi” app, and tap the **Add Dash Cam** button on the Wi-Fi home screen.
2. Tap **GX35CLD**.
3. Select a dash cam Wi-Fi network with a name that begins with “FineVu_GX35CLD.”

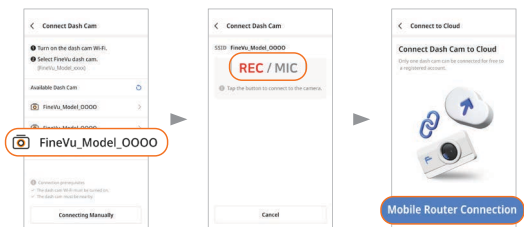


4. Tap the pairing (REC/MIC) button for the dash cam.
5. Tap the **Connect** button. Dash cam registration and connection are complete.

Creating and connecting a cloud account to the dash cam



1. Open the “FineVu CLOUD & Wi-Fi” app, and tap the **Connect your account** button on the cloud home screen.
2. Log in with your existing Apple or Google account.
Agree to all terms and conditions, and tap the **Create an Account** button. Account connection is complete.
3. Tap the **Add Dash Cam** button.

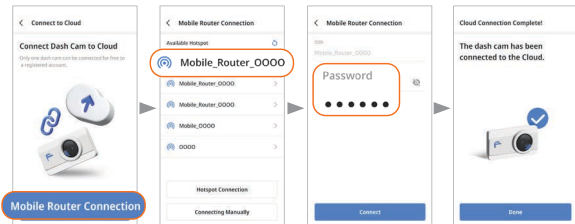


4. Select a dash cam Wi-Fi network with a name that begins with “FineVu_GX35CLD.”
5. Tap the pairing (REC/MIC) button for the dash cam.
After the dash cam is registered successfully, you are automatically redirected to the mobile router connection screen (shown on the next page).

How to Use the FineVu CLOUD & Wi-Fi App

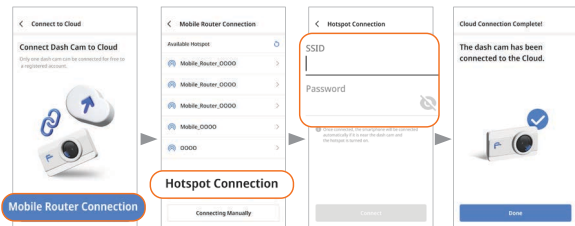
6. Connect to the cloud via a mobile router or smartphone's hotspot.

Connecting via a mobile router



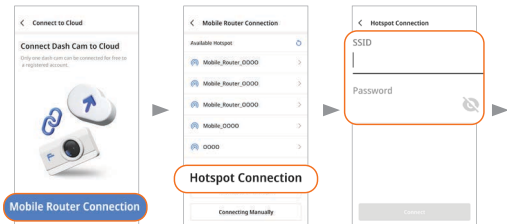
- 1) On the Connect to Cloud screen, tap the **Mobile Router Connection** button.
- 2) Select the hotspot's SSID to connect to.
 - If the hotspot is not found on the list, tap the **Connecting Manually** button. Next, manually enter the SSID.
- 3) Enter the password for the selected hotspot's SSID. A connection is established to the cloud.

Connecting via a smartphone's hotspot (Android)

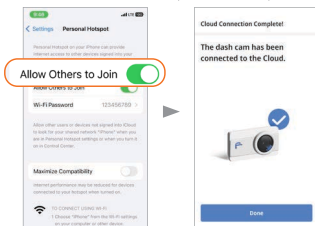


- 1) On the Connect to Cloud screen, tap the **Mobile Router Connection** button.
- 2) Tap the **Hotspot Connection** button.
- 3) Use the smartphone settings to turn on the hotspot, return to the app, and then enter the hotspot's SSID and password. A connection is established to the cloud.

Connecting via a smartphone's hotspot (iOS)



- 1) Turn on the hotspot on the smartphone, and tap the **Mobile Router Connection** button on the Connect to Cloud screen of the app.
- 2) Tap the **Hotspot Connection** button.
- 3) Enter the selected hotspot's SSID and password.



- 4) In the smartphone settings, navigate to "Settings" > "Personal Hotspot."
- 5) Turn on the "Allow Others to Join" mode, and wait. If you move to a different screen before a hotspot connection is established, the connection fails.
- 6) When the device sounds "Cloud connected," return to the app screen. A connection is established to the cloud.



- Make sure you enter the correct SSID and password for the mobile router or hotspot.
- Connecting to the cloud for the first time may take some time. Please wait with patience.
- If the hotspot-enabled smartphone is moved away from the dash cam, the cloud connection may disconnect.
- When the hotspot-enabled smartphone turns off, the cloud connection disconnects.
- **VPN (Proxy) program may restrict certain communication addresses, and confuse with the dash cam connection or the app is forced to quit.**
Pause your VPN while using FineVu CLOUD & Wi-Fi app.

How to Use the FineVu CLOUD & Wi-Fi App

Reconnection

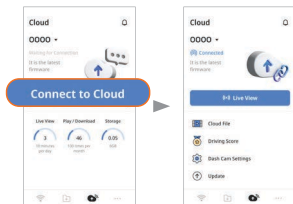
After registering the device for the first time, fast reconnection is possible by tapping the **Connect Dash Cam** and **Connect to Cloud** buttons from the home screen.

Wi-Fi reconnection



1. Turn on Wi-Fi for the dash cam.
2. On the Wi-Fi home screen of the “FineVu CLOUD & Wi-Fi” app, tap the **Connect Dash Cam** button. Dash cam connection is complete.

Cloud reconnection



1. On the cloud home screen of the “FineVu CLOUD & Wi-Fi” app, select the device model name to connect to the cloud, and tap the **Connect to Cloud** button. Cloud connection is complete.

Using the Cloud and Wi-Fi features

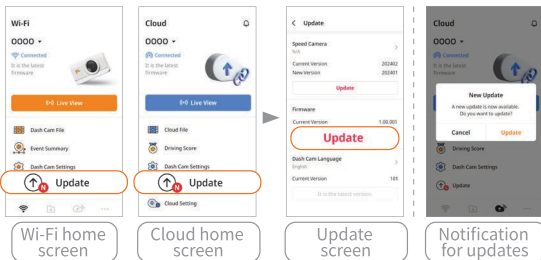
Concerning the Cloud and Wi-Fi features, Read the FineVu CLOUD & Wi-Fi app manual.



How to Update the Firmware

Updating the firmware from the app

1. With the dash cam connected, navigate to the Wi-Fi or cloud home screen, and tap the **Update** button.
The screen displays the versions of the Speed Camera, firmware, dash cam language, and app for the connected dash cam.
2. Tap **Update** to proceed to updating.
 - The Update button does not appear if the latest versions are installed.



Updating the firmware on PC

1. Download the latest firmware from the website.
(<http://en.finevu.com>)
2. Take the Micro SD card out of the product, insert it into the reader, and connect it to the PC.
3. When the card connects to the PC, a new volume will appear on the PC desktop.
(It is recommended to format the Micro SD card if it was used in other devices before updating.)
4. Decompress the downloaded firmware and copy it to the root folder in the Micro SD card.
5. After inserting the copied Micro SD card into the product, turn on the power of the vehicle (ACC On) or start the engine to turn on the product.
6. The firmware update will be performed automatically.
7. Once the firmware update is complete, the product reboots automatically.